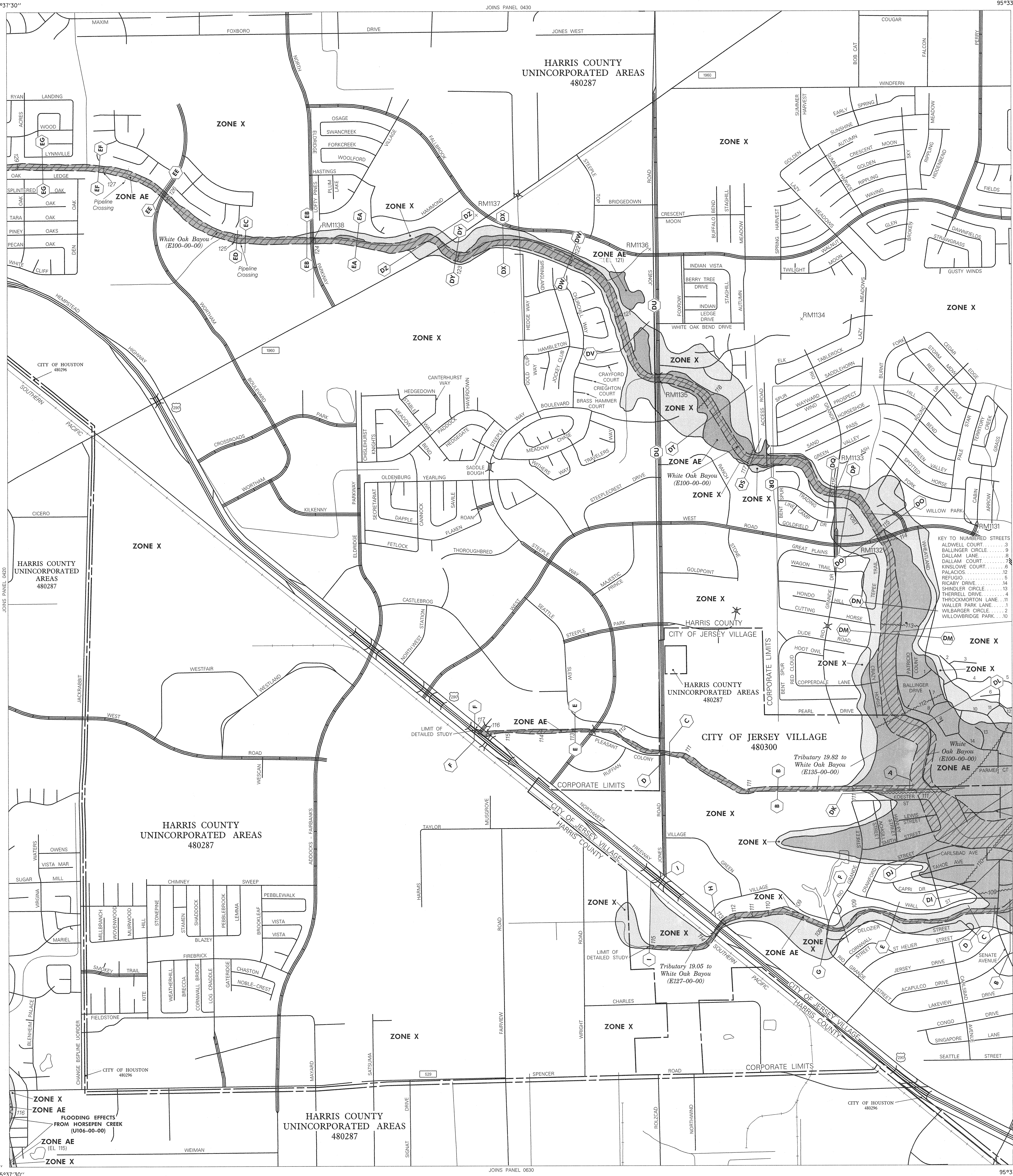


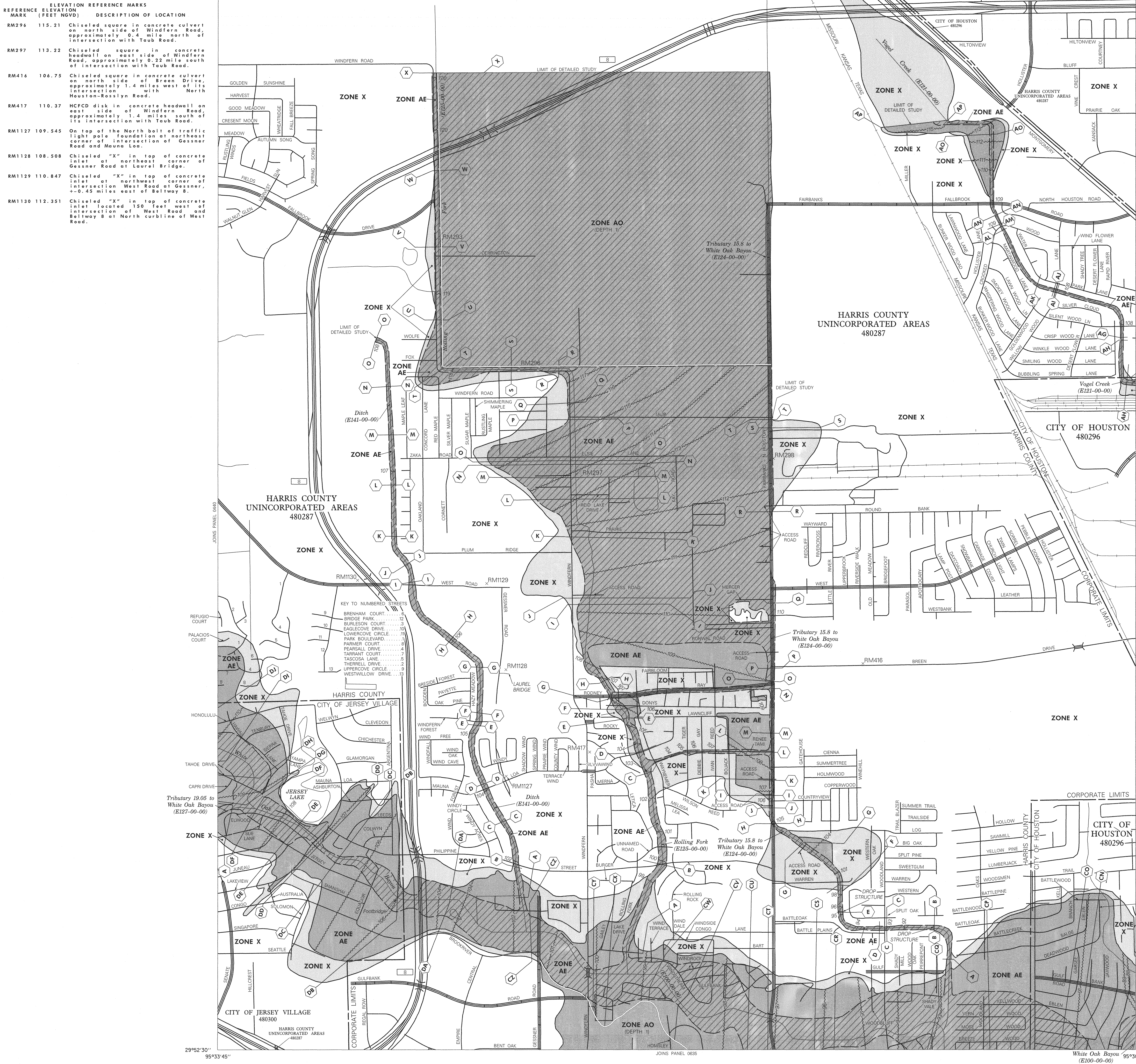
REFERENCE ELEVATION MARK (FEET NGVD)	DESCRIPTION OF LOCATION
RM1131 114.494	Chiseled "X" in top of concrete inlet at northeast corner of West Road and Cabin Creek.
RM1132 116.013	On top of Harris County Flood Control Disk stamped E100 BM31 on downstream side of bridge over White Oak Bayou on West Road, 0.15 miles East of Rio Grande.
RM1133 116.708	On top of Harris County Flood Control Disk stamped E100 BM-22 on downstream side of bridge over White Oak Bayou on Rio Grande +/-0.15 miles North of West Road.
RM1134 118.096	Chiseled "X" on top of concrete inlet at northeast corner of intersection of Jones Road at Pony Grande.
RM1135 119.311	On top of Harris County Flood Control Disk on downstream side of bridge over White Oak Bayou on Jones Road, +/-225 feet South of Trail Ridge.
RM1136 123.467	On top of South boll of traffic signal pole foundation at northwest corner of Jones Road at Fallbrook.
RM1137 124.043	Chiseled "X" on top of concrete inlet in West curbline of Fallbrook 175 feet North of FM 1960.
RM1138 130.096	Chiseled "X" in top of curb on downstream side of bridge over White Oak Bayou on North Eldridge 0.25 miles North of FM 1960.





REFERENCE ELEVATION MARK (FEET NGVD)	DESCRIPTION OF LOCATION
RM296 115.21	Chiseled square in concrete culvert on north side of Windfern Road, approximately 0.4 mile north of intersection with Taub Road.
RM297 113.22	Chiseled square in concrete headwall on east side of Windfern Road, approximately 0.2 mile south of intersection with Taub Road.
RM416 106.75	Chiseled square in concrete culvert on north side of Windfern Road, approximately 1.4 miles west of its intersection with North Houston-Rosslyn Road.
RM417 110.37	HCFCD disk in concrete headwall on east side of Windfern Road, approximately 1.4 miles west of its intersection with Taub Road.
RM1127 109.545	On top of the North bolt of traffic light pole foundation at northeast corner of intersection of Gessner Road and Mauna Loa.
RM1128 108.508	Chiseled "X" in top of concrete inlet at northeast corner of Gessner Road at Laurel Bridge.
RM1129 110.847	Chiseled "X" in top of concrete inlet at northwest corner of intersection West Road at Gessner, ~0.45 miles east of Beltway 8.
RM1130 112.351	Chiseled "X" in top of concrete inlet located 150 feet west of intersection of West Road and Beltway 8 at North curbline of West Road.

REFERENCE ELEVATION MARK (FEET NGVD)	DESCRIPTION OF LOCATION
RM296 115.21	Chiseled square in concrete culvert on north side of Windfern Road, approximately 0.4 mile north of intersection with Taub Road.
RM297 113.22	Chiseled square in concrete headwall on east side of Windfern Road, approximately 0.2 mile south of intersection with Taub Road.
RM416 106.75	Chiseled square in concrete culvert on north side of Windfern Road, approximately 1.4 miles west of its intersection with North Houston-Rosslyn Road.
RM417 110.37	HCFCD disk in concrete headwall on east side of Windfern Road, approximately 1.4 miles west of its intersection with Taub Road.
RM1127 109.545	On top of the North bolt of traffic light pole foundation at northeast corner of intersection of Gessner Road and Mauna Loa.
RM1128 108.508	Chiseled "X" in top of concrete inlet at northeast corner of Gessner Road at Laurel Bridge.
RM1129 110.847	Chiseled "X" in top of concrete inlet at northwest corner of intersection West Road at Gessner, ~0.45 miles east of Beltway 8.
RM1130 112.351	Chiseled "X" in top of concrete inlet located 150 feet west of intersection of West Road and Beltway 8 at North curbline of West Road.



### LEGEND

**SPECIAL FLOOD HAZARD AREAS UNINUNDATED BY 100-YEAR FLOOD**

**ZONE A** No base flood elevations determined.

**ZONE AE** Base flood elevations determined.

**ZONE AH** Flood depths of 1 to 3 feet usually areas of ponding; base flood elevations determined.

**ZONE AO** Flood depths of 1 to 3 feet usually sheet flow on sloping terrain; average depths determined. For areas of alluvial fan flooding, velocities also determined.

**ZONE A99** To be protected from 100-year flood by Federal flood protection system under construction; no base flood elevations determined.

**ZONE V** Coastal flood with velocity hazard (wave action); no base flood elevations determined.

**ZONE VE** Coastal flood with velocity hazard (wave action); base flood elevations determined.

**FLOODWAY AREAS IN ZONE AE**

**OTHER FLOOD AREAS**

**ZONE X** Areas determined to be outside 500-year floodplain.

**OTHER AREAS**

**ZONE D** Areas in which flood hazards are undetermined.

**UNDEVELOPED COASTAL BARRIERS**

Identified 1983  
Coastal barrier areas are normally located within or adjacent to Special Flood Hazard Areas.

Identified 1993  
Coastal barrier areas are normally located within or adjacent to Special Flood Hazard Areas.

Otherwise Protected Areas

Floodplain Boundary

Floodway Boundary

Zone D Boundary

Boundary Dividing Special Flood Hazard Zones, and Boundary Dividing Areas of Different Coastal Base Flood Elevations Within Special Flood Hazard Zones.

Base Flood Elevation Line: Elevation in Feet. See Map Index for Elevation Datum.

Cross Section Line

Base Flood Elevation in Feet Where Uniform Within Zone. See Map Index for Elevation Datum.

Elevation Reference Mark

River Mile

Horizontal Coordinates Based on North American Datum of 1927 (NAD 27) Projection.

97°07'30", 32°22'30"

### NOTES

This map is for use in administering the National Flood Insurance Program; it does not necessarily identify all areas subject to flooding, particularly from local drainage sources of small size, or all planimetric features outside Special Flood Hazard Areas. The community map repository should be consulted for more detailed data on BFEs, and for any information on floodway designations, prior to use of this map for property purchase or construction purposes.

Areas of Special Flood Hazard (100-year flood) include Zones A, AE, AH, AO, A99, V, VE, and D.

Certain areas not in Special Flood Hazard Areas may be protected by flood control structures.

Boundaries of the floodways were computed at cross sections and interpolated between cross sections. The floodways were based on hydraulic considerations with regard to requirements of the Federal Emergency Management Agency.

Floodway widths in some areas may be too narrow to show to scale. Refer to Floodway Data Table where floodway width is shown at 1200 inch.

Coastal base flood elevations apply only to landward of 0.0 NGVD, and the effects of wave action, these elevations may also differ significantly from those developed by the National Weather Service for hurricane evacuation planning.

Corporate limits shown are current as of the date of this map. The user should contact appropriate community officials to determine if corporate limits have changed subsequent to the issuance of this map.

This map may incorporate approximate boundaries of Coastal Barrier Resource System Units and/or Otherwise Protected Areas established under the Coastal Barrier Improvement Act of 1990 (PL 101-591).

For community map revision history prior to countywide mapping, see Section 6.0 of the Flood Insurance Study Report.

For adjoining map panels and base map source see separately printed Map Index.

**MAP REPOSITORY**  
Refer to Repository Listing on Map Index

**EFFECTIVE DATE OF COUNTYWIDE FLOOD INSURANCE RATE MAP:**  
SEPTEMBER 28, 1990

**EFFECTIVE DATE(S) OF REVISION(S) TO THIS PANEL:**  
SEPTEMBER 30, 1992; NOVEMBER 6, 1996

Map revised April 20, 2000, to update corporate limits to add base flood elevations, to change base flood elevations, to add special flood hazard areas, to change special flood hazard areas, to change zone designations, to add roads and road names, to reflect updated topographic information, to incorporate previously issued letters of map revision and to incorporate previously issued letters of map amendment.

To determine if flood insurance is available, contact an insurance agent or call the National Flood Insurance Program at (800) 638-6620.

APPROXIMATE SCALE IN FEET  
1000 0 1000

### NATIONAL FLOOD INSURANCE PROGRAM

## FIRM

### FLOOD INSURANCE RATE MAP

#### HARRIS COUNTY, TEXAS AND INCORPORATED AREAS

**PANEL 445 OF 1135**  
(SEE MAP INDEX FOR PANELS NOT PRINTED)

CONTAINS:	COMMUNITY	NUMBER	PANEL	SUFFIX
HARRIS COUNTY, TEXAS	480296	0445	K	
JERSEY VILLAGE, CITY OF	480300	0445	K	
HARRIS COUNTY UNINCORPORATED AREAS	480287	0445	K	

**MAP NUMBER**  
48201C0445 K

**MAP REVISED:**  
APRIL 20, 2000

Federal Emergency Management Agency