

Jersey Village City Council Meeting August 21, 2017

Fred W. Ziehe

8409 Hawaii Ln

- As you will recall, last month I questioned the slope of the By-Pass
- See attached map of By-Pass
- Water has to rise at least 3 ft before it can even enter the By-Pass (See photo 01)
- After the rainstorm on August 8, 2017 I took videos of WOB at the X and By-Pass to capture how it actually performs.
  - See flow below the X (See video 02)
  - See flow in Main Channel near the By-Pass (Video 03) and in the upstream end of the By-Pass (Video 04)
  - See “flow” or lack thereof in the By-Pass at Senate, partway down the By-Pass (Video 05)
- This lack of flow in the By-Pass, even with these water levels is **NOT** what I expected from a By-Pass.
  - Dannenbaum determined that 48% of the flow down WOB was diverted to the By-Pass.
    - I disagree with Dannenbaum’s assessment. It doesn’t seem logical.
  - HCFCD says the By-Pass is “...only designed to take about 1/3 of the flow. It is not a full bypass or divergence.”
  - They go on to say “Another way to look at the bypass is similar to an off line detention basin.”
    - They are saying it’s designed to let water continue flowing down the Main WOB channel, until the water gets to a certain level and THEN starts flowing down the By-Pass.
    - My contention is that it would be better if the By-Pass was taking water initially..... at the same time it’s flowing in the Main Channel.
  - As a result, the By-Pass does not provide JV any benefit at the start of a storm
  - I question the 30% determination by HCFCD, since the By-Pass does not kick-in until later in the rainstorm.
    - My question would be..... **30% of WHAT? 30% of WHEN?**
- These videos confirm what we have witnessed. The design is intentionally causing the slow flow. We will continue looking at the slope as well.

In My  
OPINION →

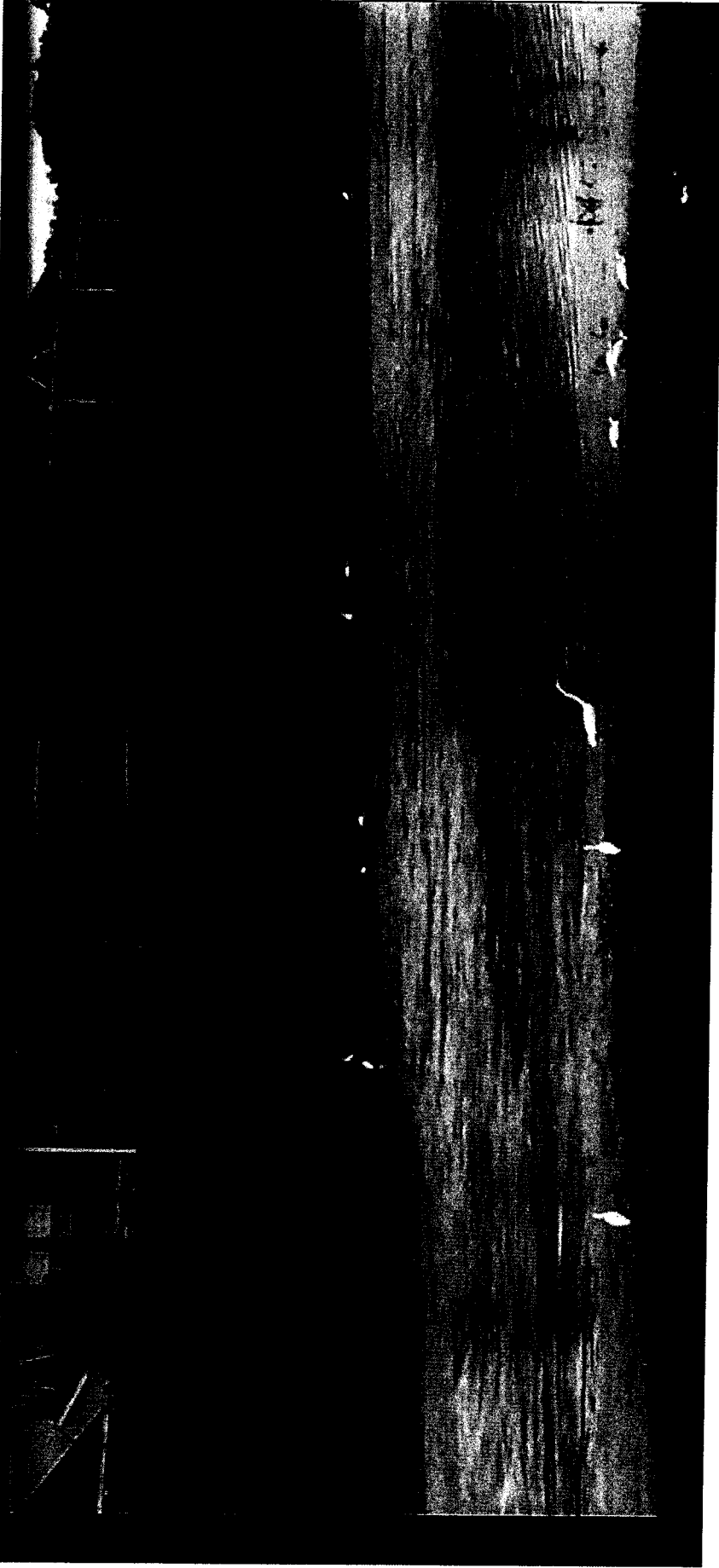




ENTRANCE TO BYPASS  
ON DRY DAY

PHOTO 01

03\_FloodMainW039\_Fig02405\_Plate\_017\_05.28.1923\_1515\_1757



MAIN CHANNEL NEAR BY PASS

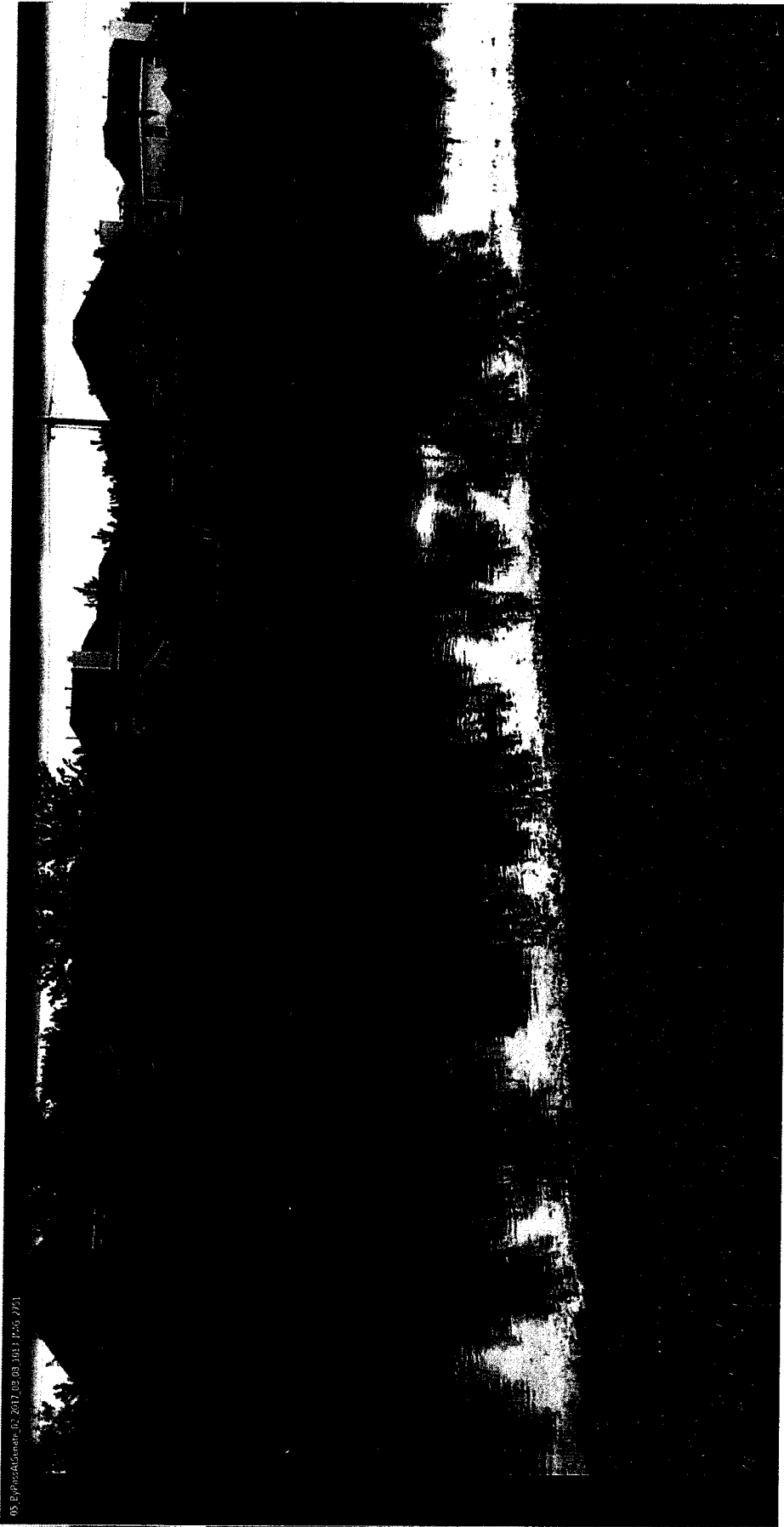
VIDEO 03

04 Mamwoce Pass 2017 03 03 10:03:25



UPSTREAM END OF BY-PASS

VIDEO 04



05\_P0000A00000\_02\_2017\_02\_03\_1011\_1235\_2751

By-Pass AT SENATE AVE

Video 05

