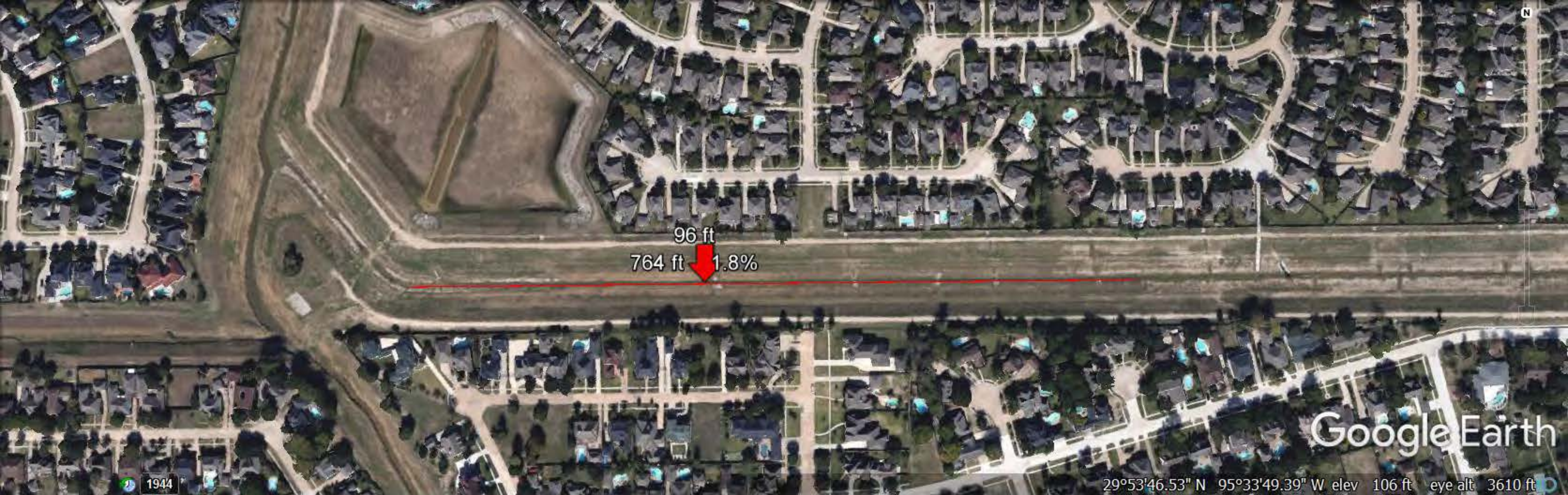


## Jersey Village City Council Meeting July 17, 2017

### Fred W. Ziehe public comments

- As you will recall, I stated at the most recent Flood Town Hall meeting, that water in the By-Pass flows in the wrong direction during certain stages of flooding
- Attached (and presented) are dip lines along the length and cross section lines across the By-Pass using Google Earth.
- The first four (4) dip lines are taken in the center of the By-Pass from West to East.
  - Essentially flat and even increasing in elevation going to the Beltway (i.e., the wrong dip).... 94' to 97' elevation
  - The correct dip does not occur until right before getting to the Beltway, where it does appear to dip in the correct direction....92' to 93' elevation
  - While Google Earth may have some averaging issues occurring, these confirm our observations that water flows in the wrong direction in the By-Pass during certain stages of flooding
- The next six (6) slides show the shape of the cross-sections of the channel and also confirm that the elevation at the bottom of the channel is NOT dipping downstream, but instead is generally flat and/or increasing in elevation as you move towards the Beltway.....94' to 96' elevation
  - Again, not until you get right before the Beltway, do you see the correct direction of the dip to be at about 93'
- We met with Dannenbaum on July 6, 2017, who indicated the By-Pass had a 5' dip in the By-Pass, based on a "Post Construction" survey report from HCFCD prepared at the time of building the By-Pass.
  - We questioned if the **current conditions** in the By-Pass agree with that survey
  - I have asked for that report, but not received it yet, as of today.
  - They mentioned issues with the construction of the By-Pass due to water and sand issues and had to add rip rap into the By-Pass during construction
  - They were not able to go as deep as originally planned
- I believe this confirms the need to re-survey the By-Pass to determine the elevations that exist in it today.
  - I believe the City/Dannenbaum should undertake this effort and am asking you to do so





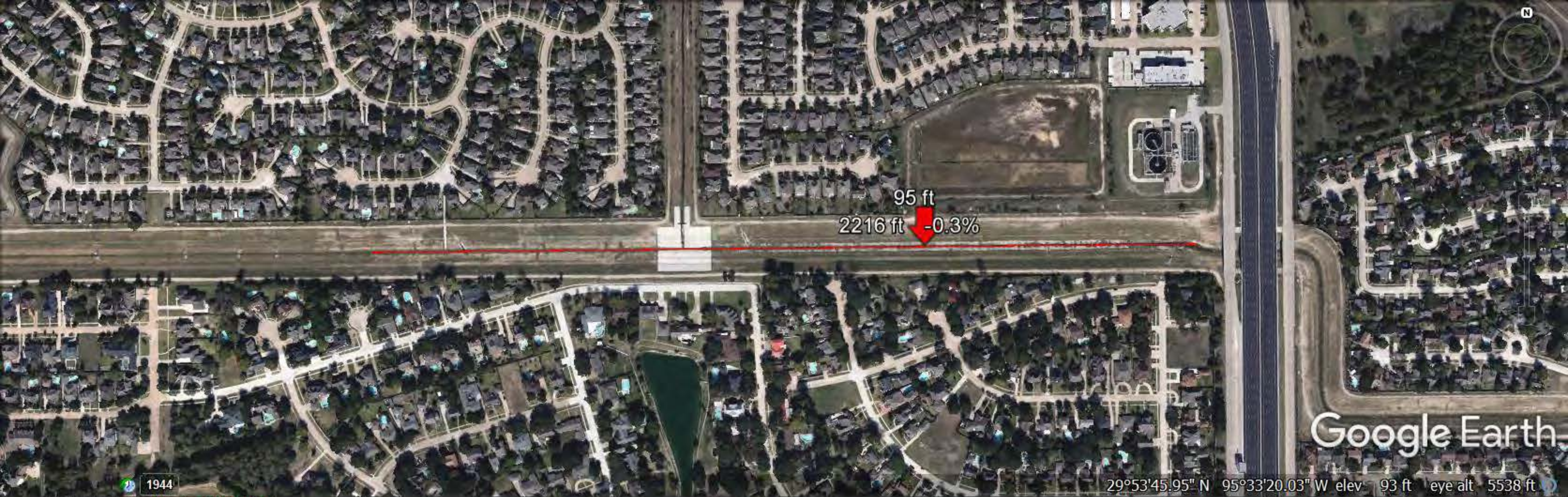
Graph: Min, Avg, Max Elevation: 93, 95, 97 ft

Range Totals: Distance: 1881 ft Elev Gain/Loss: 11.5 ft, -9.47 ft Max Slope: 15.9%, -6.3% Avg Slope: 1.0%, -1.1%

97 ft  
93 ft







Graph: Min, Avg, Max Elevation: 94, 96, 99 ft

Range Totals: Distance: 0.63 mi Elev Gain/Loss: 16.7 ft, -17.9 ft Max Slope: 7.8%, -39.1% Avg Slope: 1.0%, -1.0%





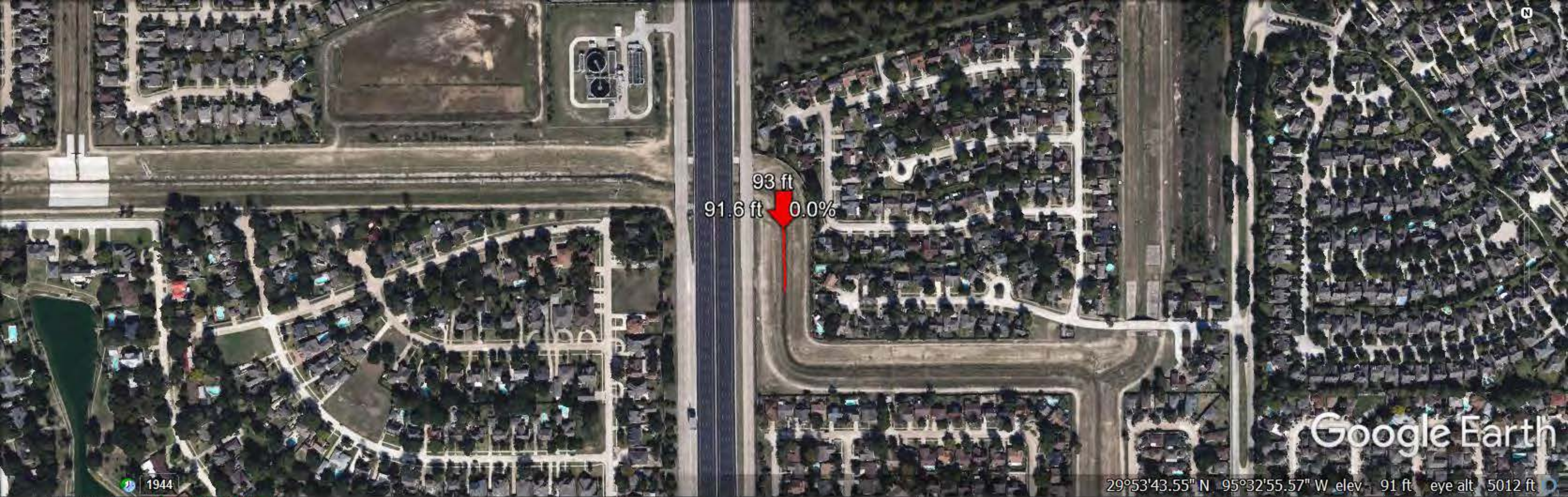


Graph: Min, Avg, Max Elevation: 92, 94, 107 ft

Range Totals: Distance: 478 ft Elev Gain/Loss: 31.4 ft, -18.0 ft Max Slope: -, -95.6% Avg Slope: -, -91.3%







Graph: Min, Avg, Max Elevation: 92, 93, 93 ft

Range Totals: Distance: 310 ft Elev Gain/Loss: 2.84 ft, -2.65 ft Max Slope: -,- Avg Slope: -,-

93 ft

93 ft

0.0%

91.6 ft

25 ft

50 ft

75 ft

100 ft

125 ft

150 ft

175 ft

200 ft

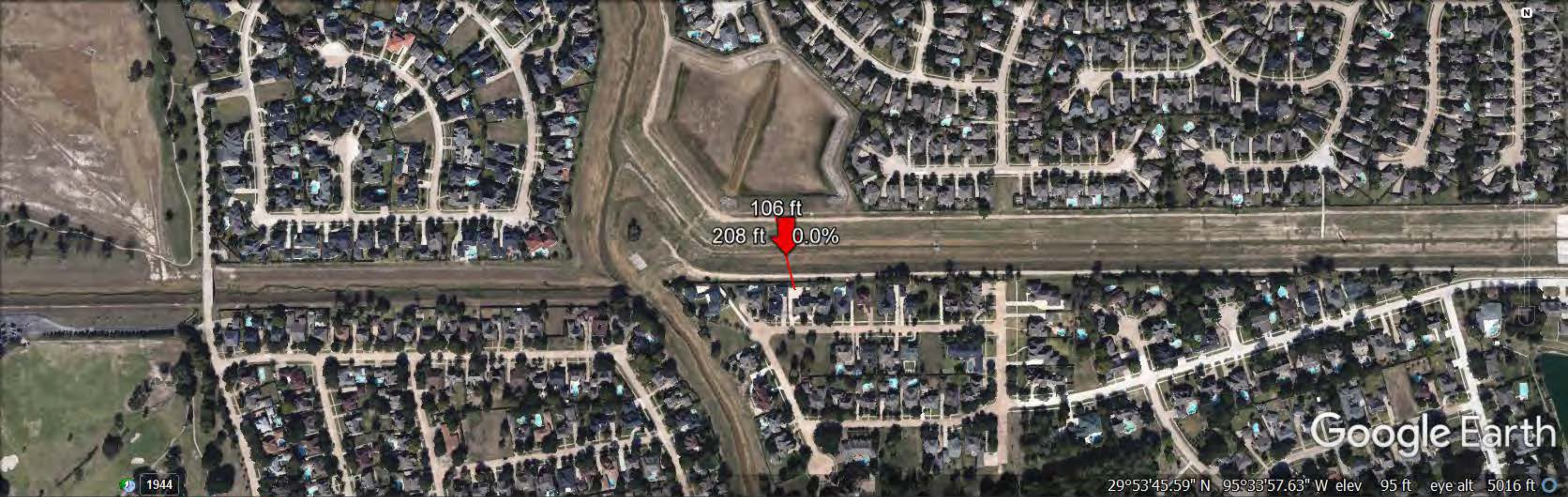
225 ft

250 ft

275 ft

310 ft





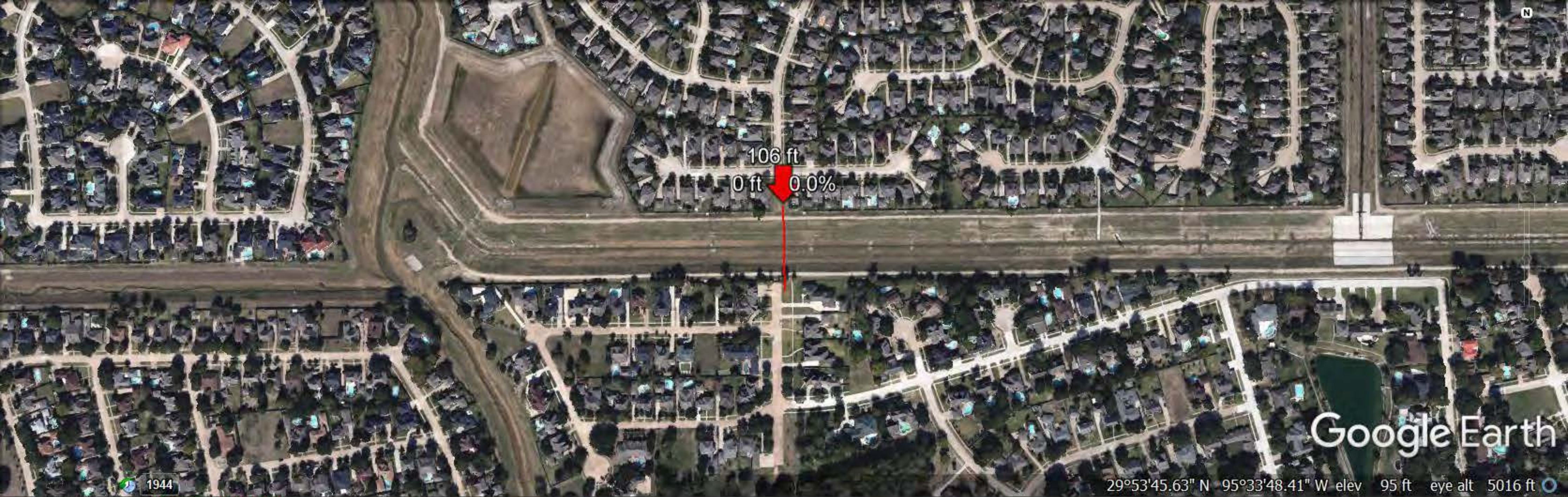
29°53'45.59" N 95°33'57.63" W elev 95 ft eye alt 5016 ft

Graph: Min, Avg, Max Elevation: 94, 103, 107 ft

Range Totals: Distance: 341 ft Elev Gain/Loss: 28 ft, -28.2 ft Max Slope: -, -95.2% Avg Slope: -, -91.9%





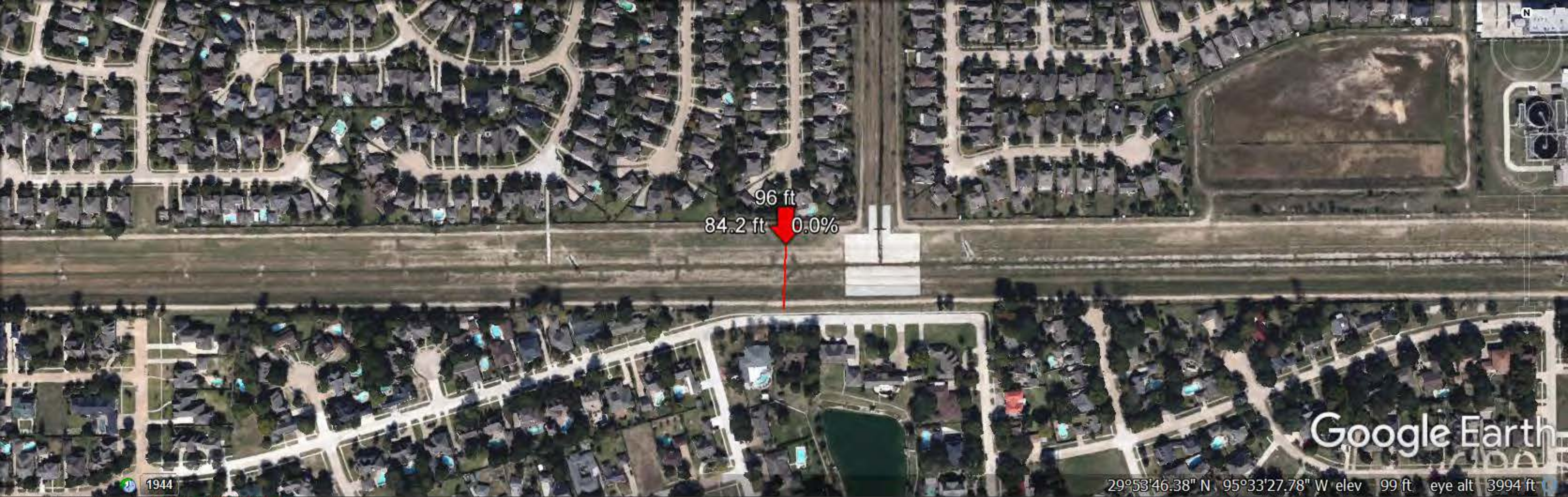


Graph: Min, Avg, Max Elevation: 95, 103, 106 ft

Range Totals: Distance: 330 ft Elev Gain/Loss: 17.4 ft, -19.3 ft Max Slope: -, -92.9% Avg Slope: -, -88.4%

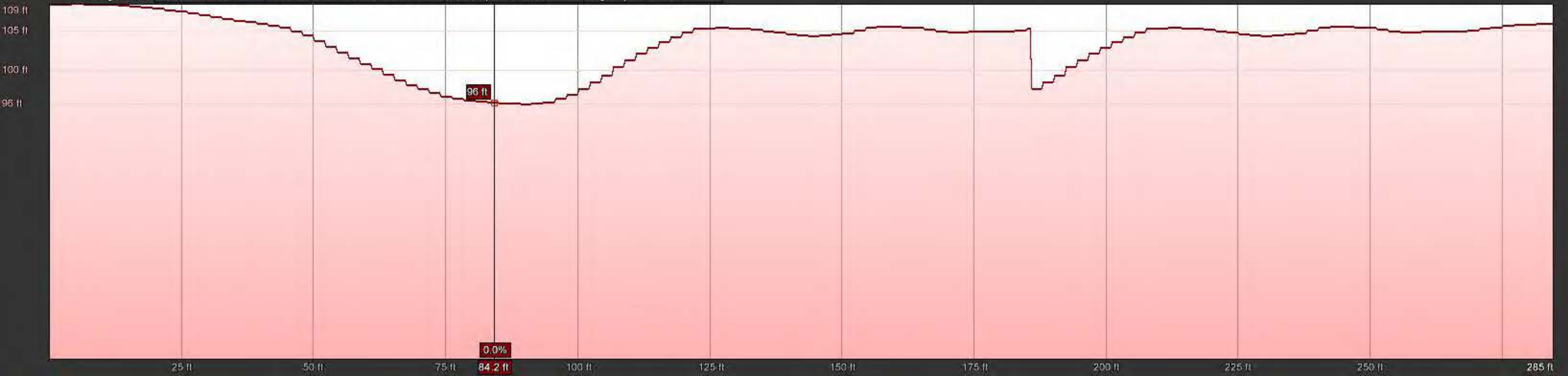




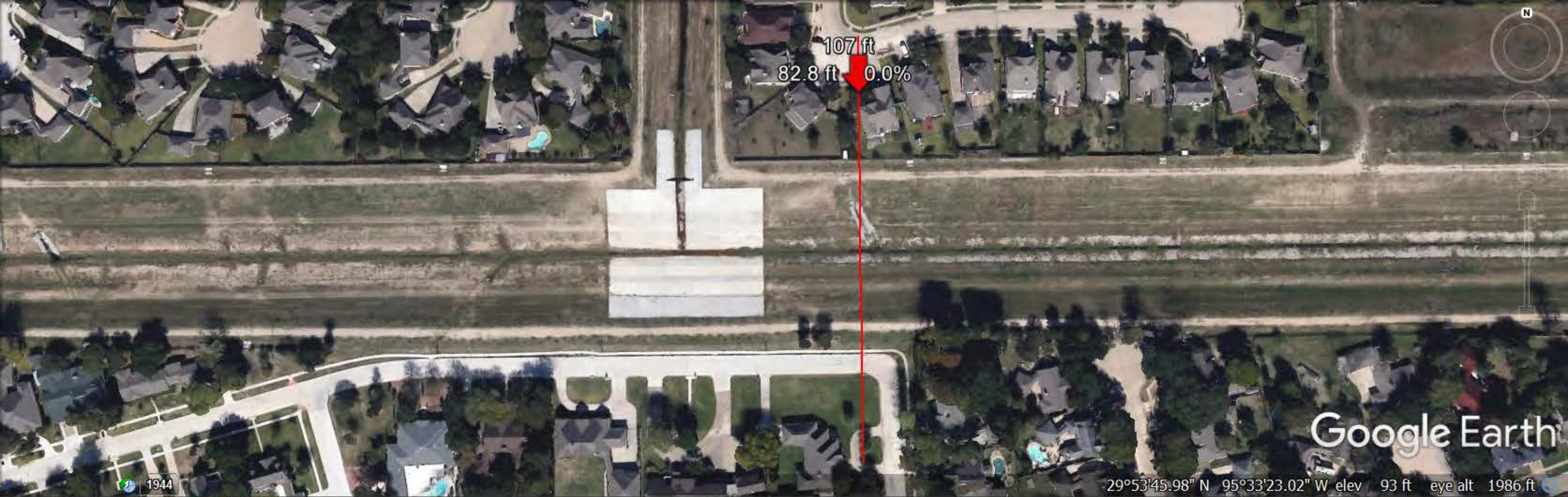


Graph: Min, Avg, Max Elevation: 96, 104, 109 ft

Range Totals: Distance: 285 ft Elev Gain/Loss: 21.8 ft, -24.2 ft Max Slope: -, -95.8% Avg Slope: -, -92.3%





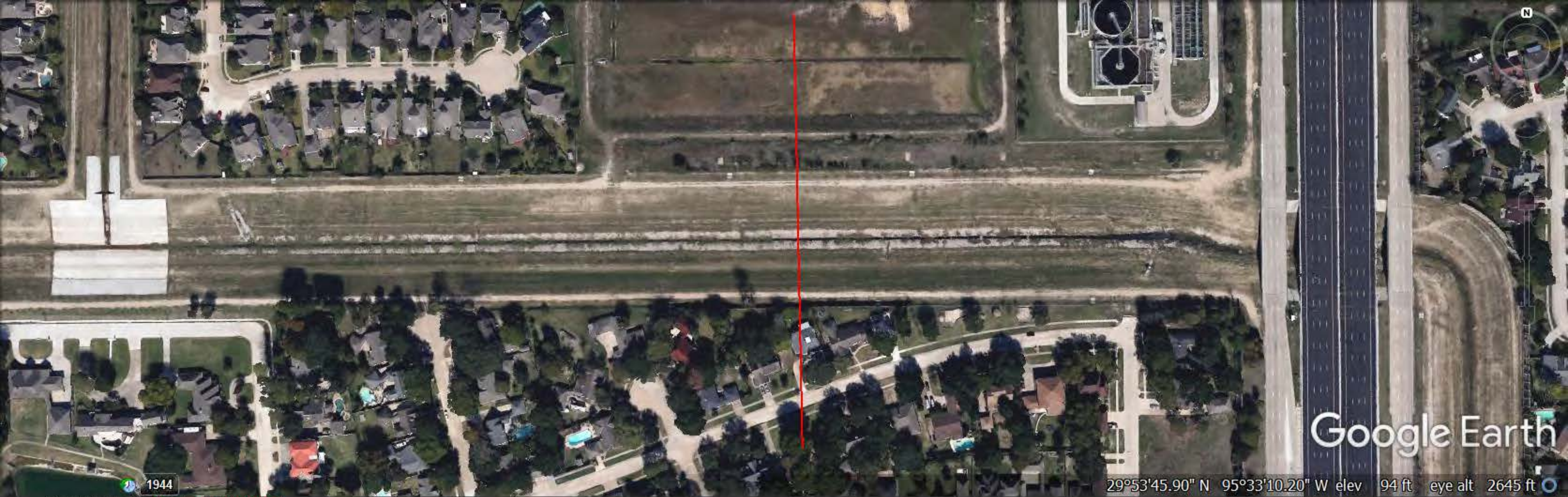


Graph: Min, Avg, Max Elevation: 95, 105, 107 ft

Range Totals: Distance: 599 ft Elev Gain/Loss: 19 ft, -18.1 ft Max Slope: -,- Avg Slope: -,-





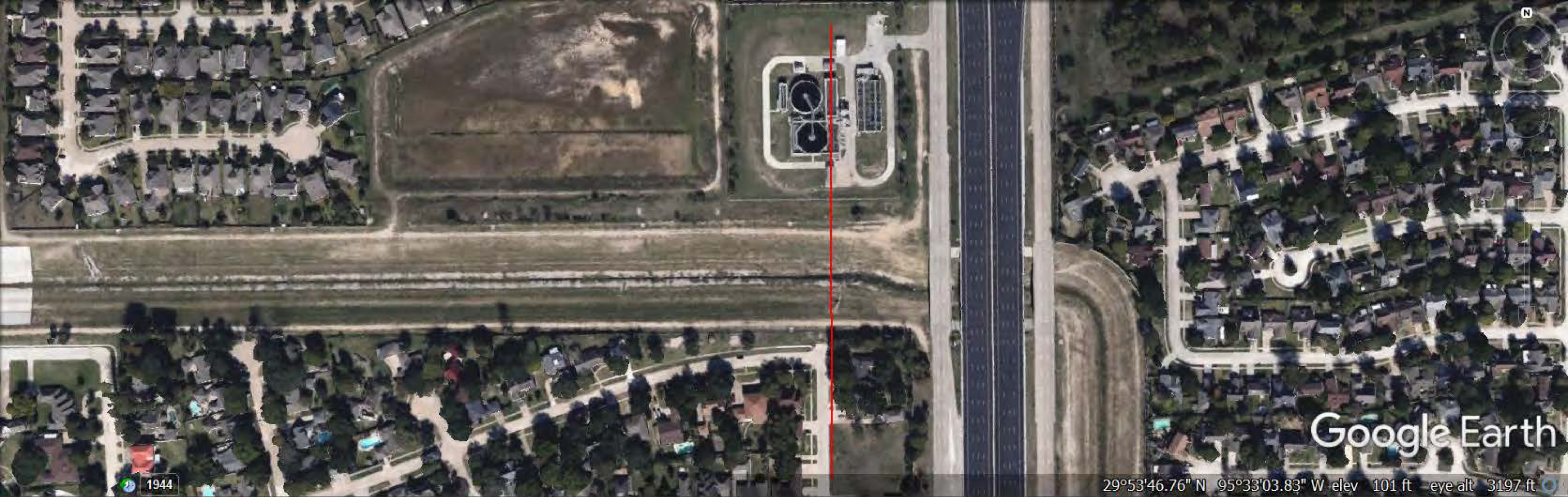


Graph: Min, Avg, Max **Elevation: 95, 104, 107 ft**

Range Totals: Distance: 825 ft Elev Gain/Loss: 31 ft, -25.4 ft Max Slope: 41.6%, -57.3% Avg Slope: 0.2%, -47.3%







Graph: Min, Avg, Max **Elevation: 93, 105, 108 ft**

Range Totals: Distance: 1040 ft Elev Gain/Loss: 19.6 ft, -21.8 ft Max Slope: 30.5%, -30.6% Avg Slope: 3.9%, -3.8%

