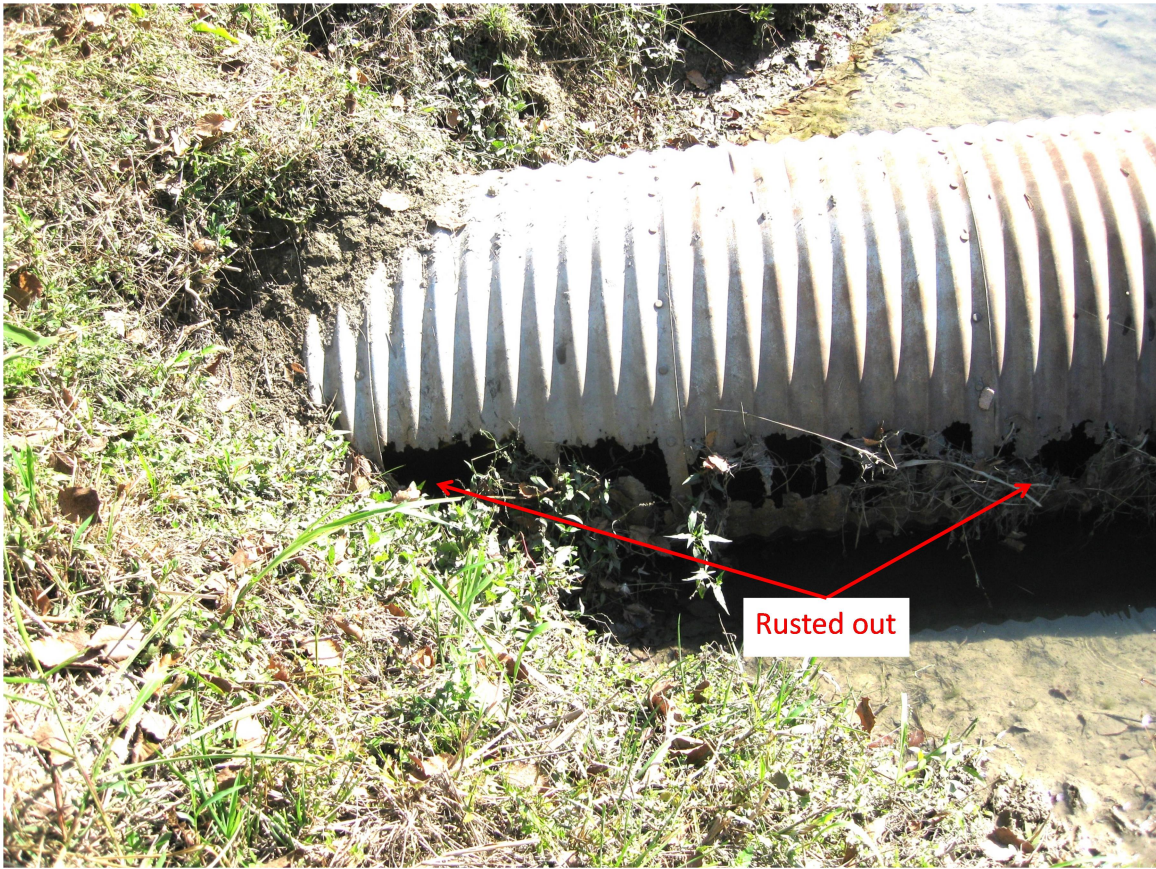


DELAPIDATED STORM DRAIN AND ASSOCIATED BANK EROSION ALONG WALL ST. CHANNEL



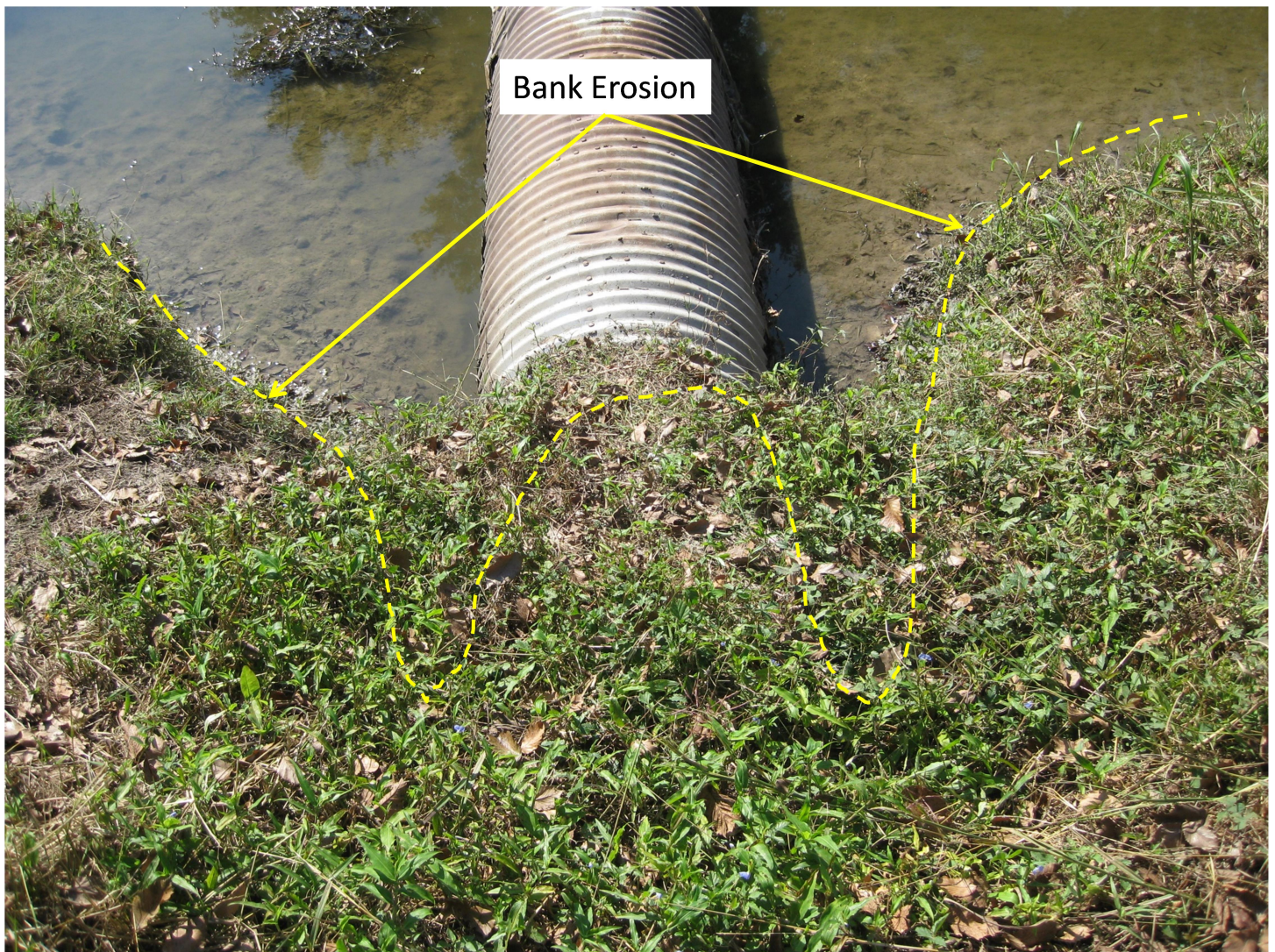
Looking east; the storm drain is rusted out along both sides.



Looking east; deterioration of the storm continues beneath the bank.



Looking west; the storm drain is rusted out along both sides.



Looking south; the Wall St. channel bank has already experienced erosion. Erosion continues beneath the bank on both sides as indicated by subsidence. During high-water flow, water probably flushes out soil from beneath the bank through the rusted out sections.